

# IFEX 2026

22<sup>nd</sup> EDITION INDIAN FOUNDRY EXHIBITION CONCURRENT

**74<sup>th</sup>** *with*  
INDIAN FOUNDRY  
CONGRESS

**MUMBAI**  
Meri Jaan



**12 13 14 FEBRUARY**

 **Bombay Exhibition Centre, (NESCO)  
Goregaon, Mumbai**

ORGANISED BY



THE INSTITUTE  
OF INDIAN  
FOUNDRYMEN







India Expo  
Centre & Mart





## **About IFEX 2026**

The 22nd International Exhibition on Foundry Technology, Equipment, Supplies and Services, concurrent with the 74th Indian Foundry Congress, presents a premier platform for both Indian and international companies to showcase cutting-edge technologies and services within the dynamic foundry sector. This event is an outstanding opportunity to explore emerging trends, foster business collaborations, and tap into new market opportunities.

-  India remains the 2nd largest producer of castings globally and continues to be one of the fastest-growing industries with remarkable aspirations and innovation.
-  The Global Foundry Market in India is projected to grow at a CAGR of 15.5% by 2029.
-  The current market size is over USD 21 billion, indicating strong demand and expansion.  
A vigorous focus on technological advancements and automation is accelerating the growth of the Indian Foundry Market.
-  India offers a business-driven environment, featuring a diversified, industry-centric, and category-focused range of products and services.

**IFEX 2026 is not just an exhibition, it's a gateway to the future of foundry excellence.**



# PRODUCT **SECTORS**



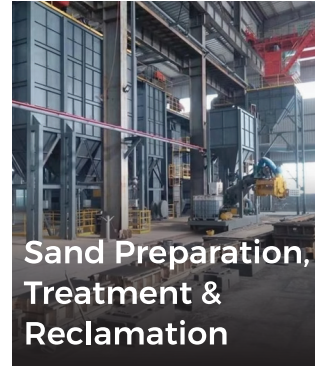
Casting  
Manufacturers-  
Complete  
Foundry Plants



Melting  
Furnaces &  
Accessories



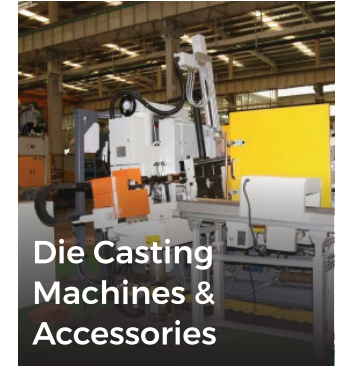
Moulding and  
Core Making



Sand Preparation,  
Treatment &  
Reclamation



Casting Machines,  
Accessories



Die Casting  
Machines &  
Accessories



Knock out,  
Finishing



Heat Treatment  
and Drying



Measuring,  
Testing, Process  
Control  
Instruments



Material  
Handling



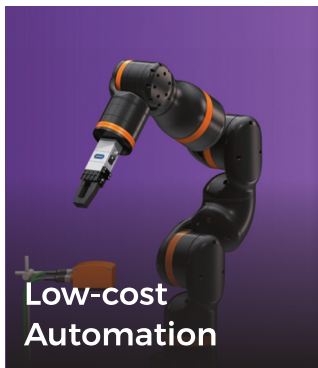
Environment  
Control



Machining



Robotics



Low-cost  
Automation



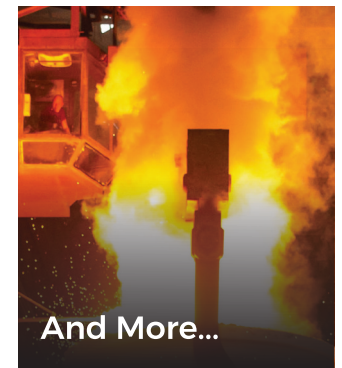
Auxiliary  
Equipment



Foundry Services



Raw Materials



And More...



# Source Smarter | Connect Faster | Grow Bigger

Unlock the best of the foundry industry at IFEX 2026!  
Accelerate your Business Your One Stop to Growth  
Here is what to expect at IFEX 2026

**400+**

Exhibitors

**17,000+**

Exhibition  
space

**15,000+**

B2B  
meetings





# Connect and Network with Best of the Buyers



Metso:Outotec





# IFEX is Leading Foundry Innovators Trust

to Showcase Breakthrough Technologies  
and Future-Ready Solutions.





# Leading Brands that have Exhibited with us





# IFEX 2026 is Redefining the Future of Foundry

Empowering Sustainable, Effective, and Modern Solutions

Building a Sustainable Tomorrow -  
Circular, Clean, and Future-Ready



Promotion of recycling and reusing in the foundry.



Sustainable systems for moulding encouraging recycle and reuse.



Partnership opportunities with industrial waste recyclers.



Dust and fume extraction systems using cutting-edge air filtration technologies.



Promoting the use of renewable energy sources







## VISITOR PROFILE

IFEX visitors are increasingly focused on driving agile, high-performance manufacturing environments that foster collaboration, innovation, and sustainability.

They attend to discover cutting-edge technologies and solutions that boost productivity, enhance casting quality, and drive growth in the foundry sector.

Buyers / Sourcing Personnel from | Automobile Industry | Engineering Industry | Defence & Aerospace | Railways | Technology Suppliers & Technology Seekers | Energy & Infrastructure | Trade Delegations | Government Officials | Investors and Promoters | R & D Institutions | Product and Service Users | Consultants | Machinery Manufacturers



# WHAT'S ON IN 2026?



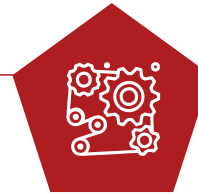
## **IFEX Technology & Innovation Zone**

Connect with industry leaders, foundry professionals, engineers, and R&D experts exploring the latest advancements in casting technologies, automation, and digitalisation.



## **IFEX Sustainable Foundry Solutions**

Discover eco-friendly practices and cutting-edge sustainability initiatives shaping the future of metal casting, including energy-efficient furnaces, circular economy models, and green sand technology.



## **Live Product Demonstration Zone**

An interactive space where exhibitors showcase breakthrough machinery, materials, and solutions to enhance efficiency and reduce costs in foundry operations.



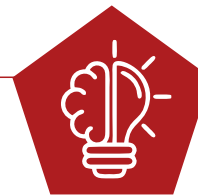
## **Technical Seminars & Knowledge Forums**

Engage in insightful discussions with global experts, industry veterans, and policymakers on emerging trends, best practices, and growth strategies for the foundry industry.



## **Networking & Business Matchmaking Sessions**

Connect with potential partners, buyers, and decision-makers through structured B2B meetings, fostering collaborations and new business opportunities.



## **Skill Development & Workforce Training Workshops**

Upskilling sessions led by industry experts to train the next generation of foundry professionals in cutting-edge manufacturing techniques and process optimization.



# ADD-ON OPTION

SN	OPPORTUNITY	NO. OF SPONSORS/ INSERTIONS	COST (IN INR)
1	Insertion of promotional collaterals in the official Visitor's Kit	Multiple	1 Lakh
2	Bags for Visitor's Will have logo of the sponsor co-branded Includes 1 piece of promotional collaterals insertion in the bag	2 Slots	2 Lakhs
3	Pendrive Sponsor/ Pen Sponsor Printed with your company logo to brand you as event sponsor (Material to be supplied by the sponsor)	Exclusive	1.5 Lakhs
4	T-Shirts Sponsor The official IFEX 2026 T-shirt will have the logo of your company	Multiple	2 Lakhs
5	Buntings / Flags The sponsor has the opportunity to brand flag banners, & Buntings inside hall which are strategically placed at the venue for maximum visibility.	50 Slots	30,000 / Branding
6	Venue Branding Hoarding   Pathway Cubicles	10 Slots	50,000 / Branding onwards*

## COST OF PARTICIPATION

	DOMESTIC	INTERNATIONAL
FOR IFEX 2026*	Shell Scheme ₹ 10,500 per sqm** Bare Space ₹ 10,000 per sqm***	Shell Scheme: € 300 per sqm** Bare Space: € 275 per sqm***
FOR CAST INDIA 2026*	Shell Scheme ₹ 10,000 per sqm** Bare Space ₹ 10,000 per sqm***	Shell Scheme: € 300 per sqm** Bare Space: € 275 per sqm***

\*GST extra as applicable.

\*Premium Location Charges: 12.5% Extra 2 sides, 3 sides & 4 sides open: 12.5% Extra

\*Above rates are for IIF members only.

\*Non-members will have to pay Associate Membership fee for participation in IFEX 2026

\*\*Minimum stall size 12 sqm with standard facilities

\*\*\*Minimum stall size 18 sqm with general facilities



## Venue

### Bombay Exhibition Centre, NESCO, Mumbai

Situated in the heart of Mumbai, the Bombay Exhibition Centre (BEC) at NESCO stands as one of India's premier venues for large-scale exhibitions and trade fairs. Renowned for its world-class infrastructure and seamless accessibility, BEC provides an ideal setting for industry professionals to network, showcase innovations, and explore business opportunities in a dynamic and well-connected environment.



## About IIF – The Institute of Indian Foundrymen

---

The Institute of Indian Foundrymen (IIF) was set up in 1950 to promote education, research, training and development to Indian foundrymen and to serve as a nodal point of reference between the customers and suppliers of the Indian foundry industry on a global scale. With its Head Quarter in Kolkata, IIF presently services the entire country through its 23 Chapters under four Regional Offices located at Kolkata, Delhi, Mumbai & Chennai. The Institute is a member of the World Foundrymen Organisation (WFO) and Confederation of Indian Industry (CII).







INDIA'S LARGEST INTEGRATED VENUE FOR CONVENTIONS & EXHIBITIONS

**INDIA EXPO CENTRE & MART**

GREATER NOIDA EXPRESSWAY, DELHI-NCR, INDIA

## About IEML -

# India Expo Centre & Mart

---

**A World-Class Venue for Business, Innovation & Global Trade!**

India Expo Centre & Mart (IEML) stands as India's premier trade and business destination, fostering world-class exhibitions, networking, and commerce. Strategically located in Greater Noida, Delhi NCR, this state-of-the-art venue spans 58 acres, offering cutting-edge infrastructure and modern facilities tailored for international B2B exhibitions, conferences, and business summits.

Recognised as one of India's largest integrated exhibition and convention centres, IEML provides an unparalleled platform for global buyers, industry leaders, policymakers, and innovators to converge, collaborate, and catalyse transformative growth.

# IFEX 2026

22ND EDITION OF INDIAN FOUNDRY EXHIBITION

**12 13 14** FEBRUARY

 **Bombay Exhibition Centre, (NESCO)  
Goregaon, Mumbai**

## SECURE YOUR PLACE AT IFEX 2026

### CUSTOMIZE YOUR PRESENCE

Can't find the perfect package? Want to maximize your brand visibility with a tailored solution?

Our team is here to help you explore options that align with your business objectives.

Request a Quote - Contact Us Now!

**Rakesh Jha**

+91 93117 08367

[ifex@indiaexpocentre.com](mailto:ifex@indiaexpocentre.com)

[www.ifexindia.com](http://www.ifexindia.com)



**cast india  
expo**

**74<sup>th</sup>** INDIAN FOUNDRY  
CONGRESS

**Scan QR Code  
to Book Your  
Space Now**



ORGANISED BY



**THE INSTITUTE  
OF INDIAN  
FOUNDRYMEN**



**India Expo  
Centre & Mart**